



Shelter Reservations

Heritage Trails Park shelter may be reserved for your use. For information and reservations see County website.



HERITAGE TRAILS COUNTY PARK



Information

For more information on exploring other Washington County Parks, please contact:

**Washington County
Planning and Parks Department**

333 East Washington St.,
Suite 2300
West Bend, WI 53095-2003
262.335.4445



www.co.washington.wi.us/parks



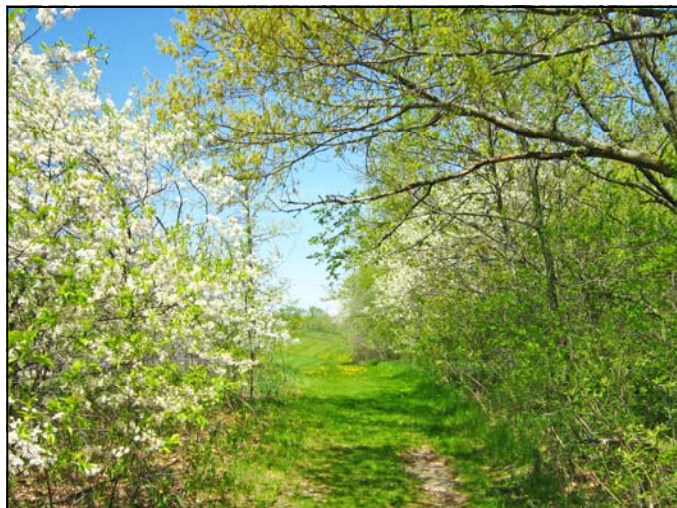
Follow us on Facebook & Twitter:

<http://facebook.com/washcoparks>

<http://twitter.com/washcoparks>

Recreational Facilities

- Reservable Shelter
- Picnic Area
- Hiking Trails
- Soccer Fields
- Play Equipment
- Water
- Restroom
- Snowmobile Trail
- 18 Hole Disc Golf Course
- 9 Hole Foot Golf Course



Washington County Park System



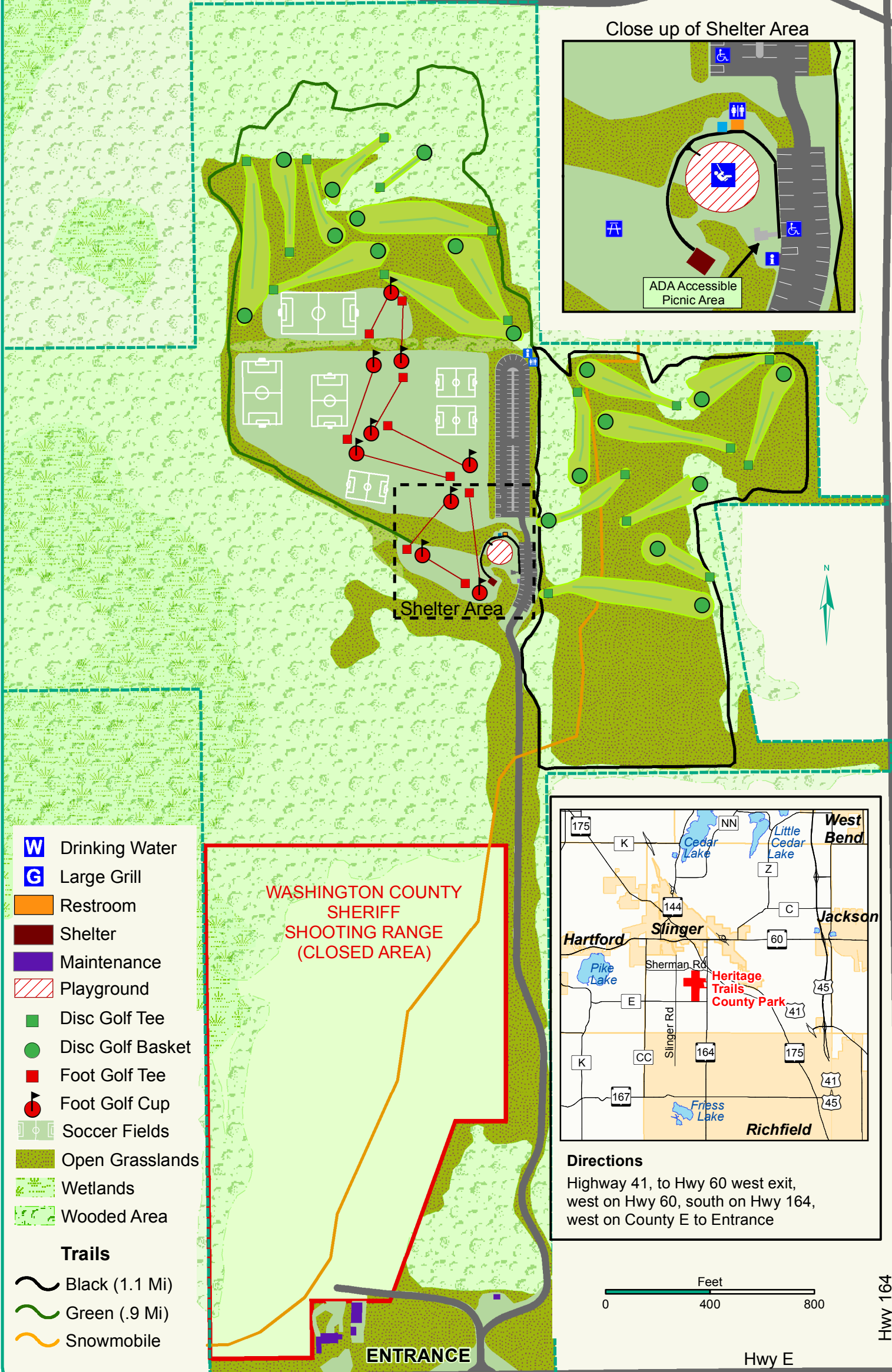
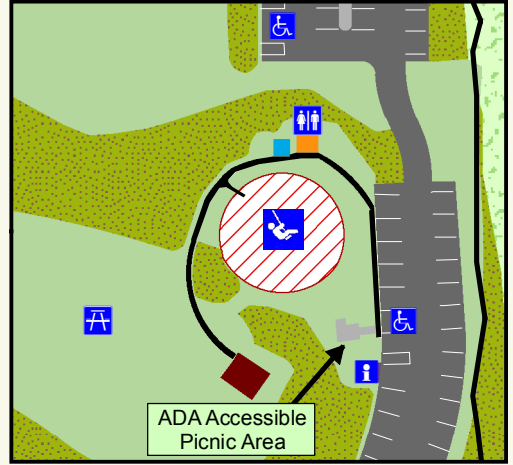
Heritage Trails County Park



4668 CTY HWY E
SLINGER, WI

Sherman Rd

Close up of Shelter Area

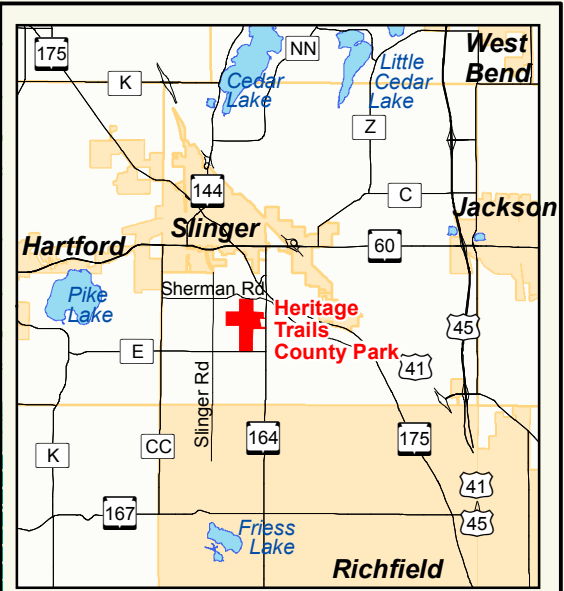


Shelter Area

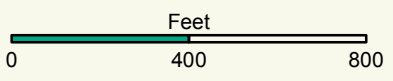
WASHINGTON COUNTY
SHERIFF
SHOOTING RANGE
(CLOSED AREA)

ENTRANCE

- W** Drinking Water
- G** Large Grill
- Restroom
- Shelter
- Maintenance
- Playground
- Disc Golf Tee
- Disc Golf Basket
- Foot Golf Tee
- Foot Golf Cup
- Soccer Fields
- Open Grasslands
- Wetlands
- Wooded Area
- Trails**
- Black (1.1 Mi)
- Green (.9 Mi)
- Snowmobile



Directions
Highway 41, to Hwy 60 west exit,
west on Hwy 60, south on Hwy 164,
west on County E to Entrance



Hwy 164

Hwy E